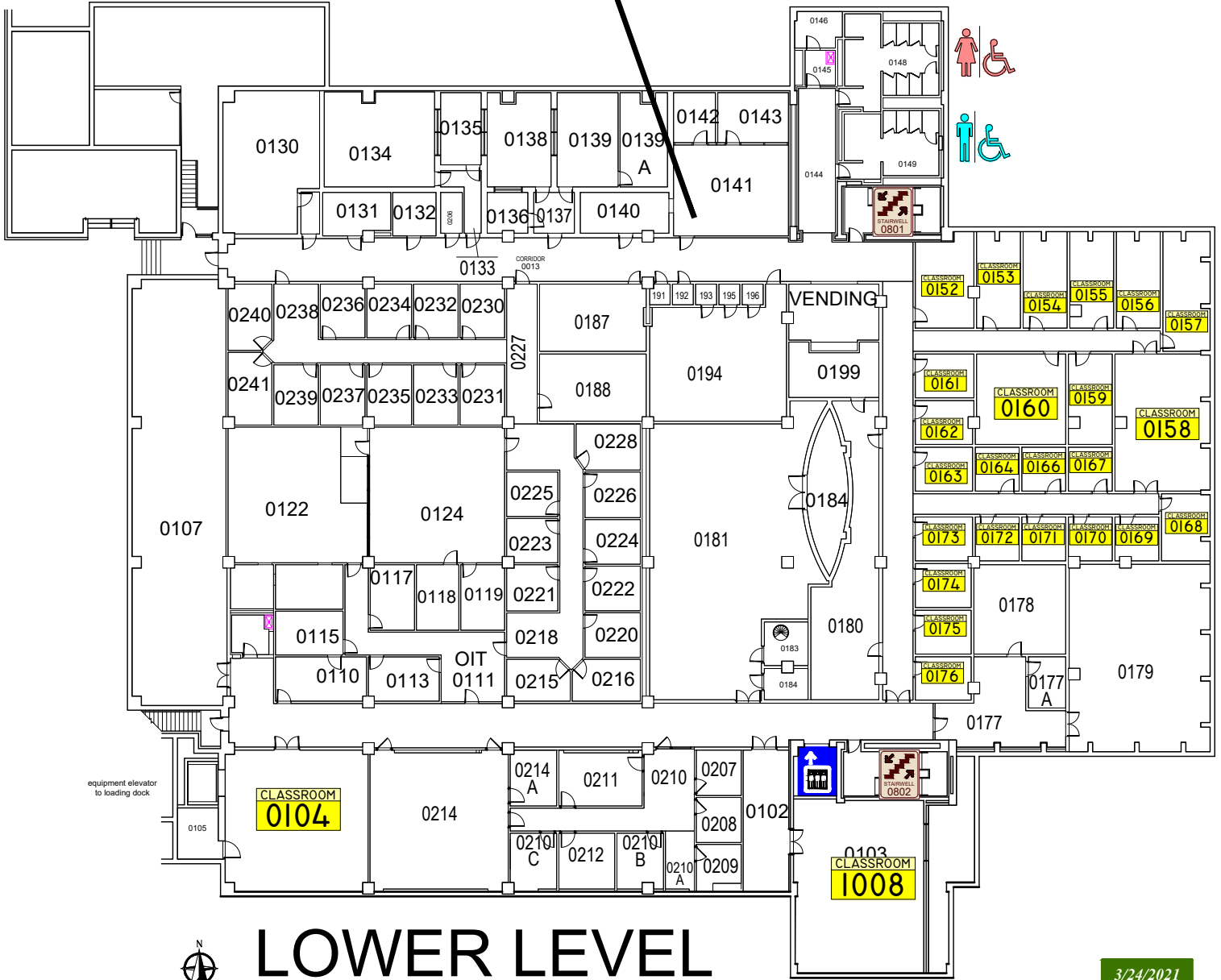


DUNHAM HALL

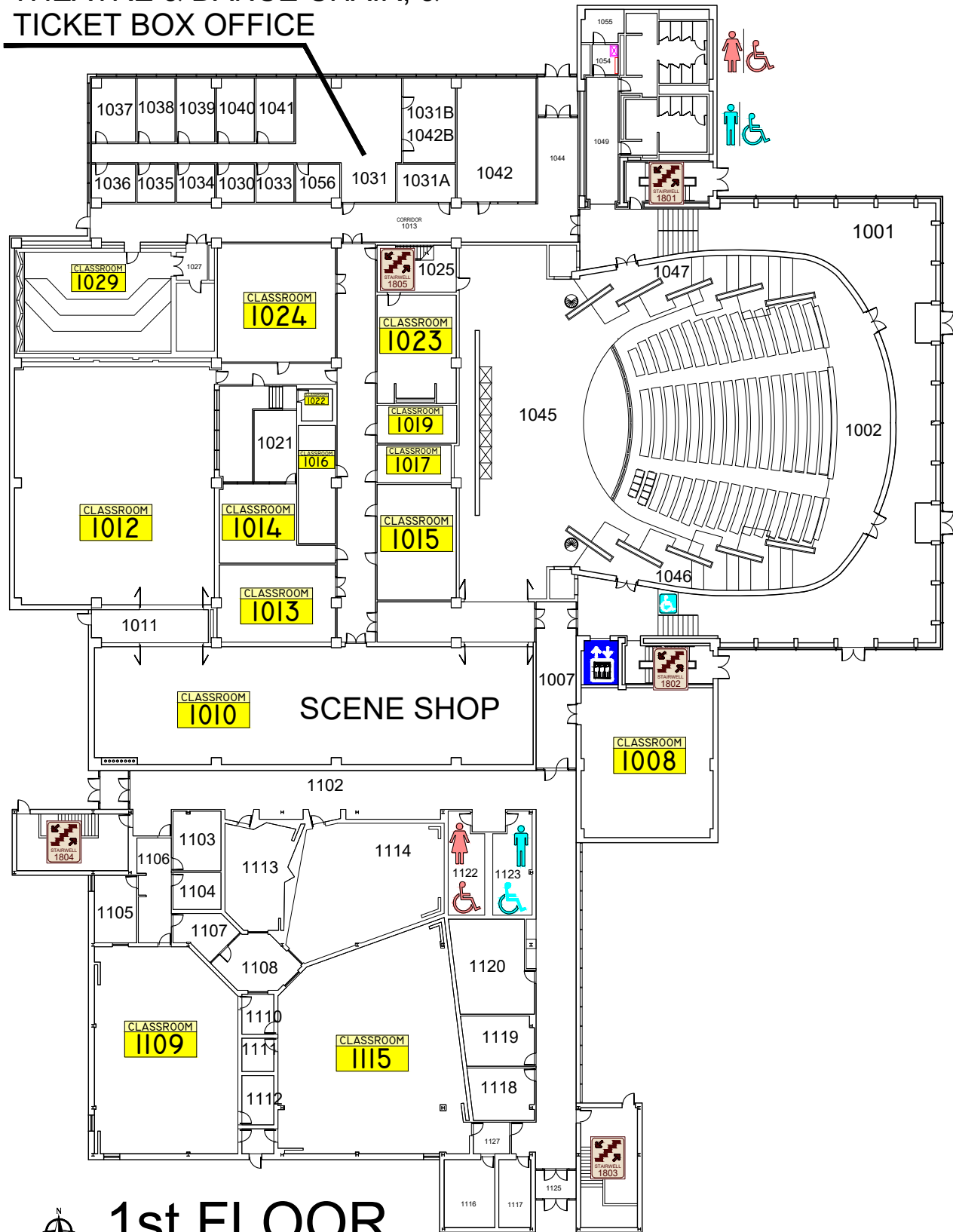
WSIE-FM RADIO STATION



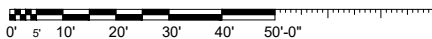
3/24/2021

DUNHAM HALL

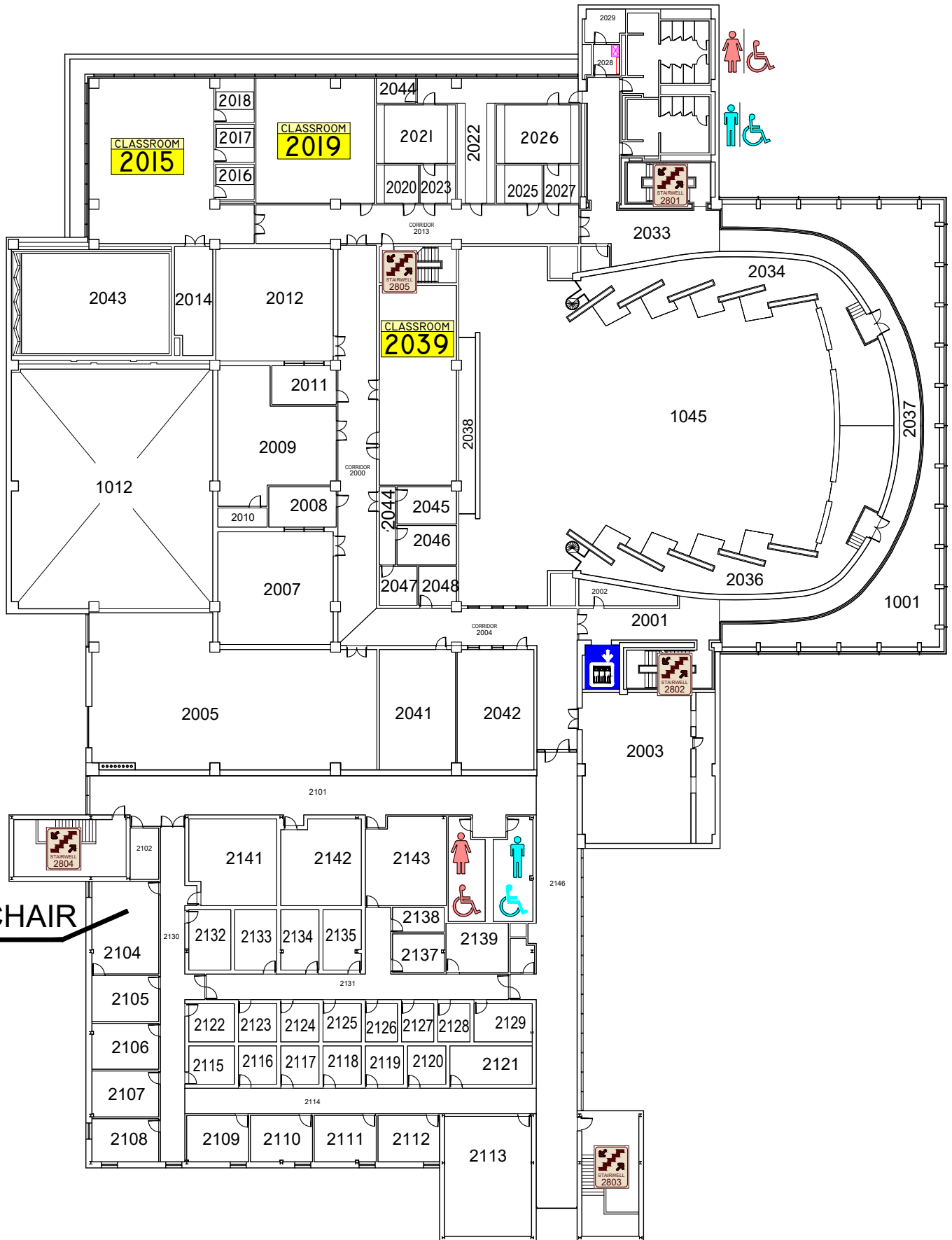
MASS COMMUNICATIONS,
THEATRE & DANCE CHAIR, &
TICKET BOX OFFICE



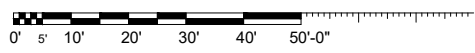
1st FLOOR



DUNHAM HALL



2nd FLOOR



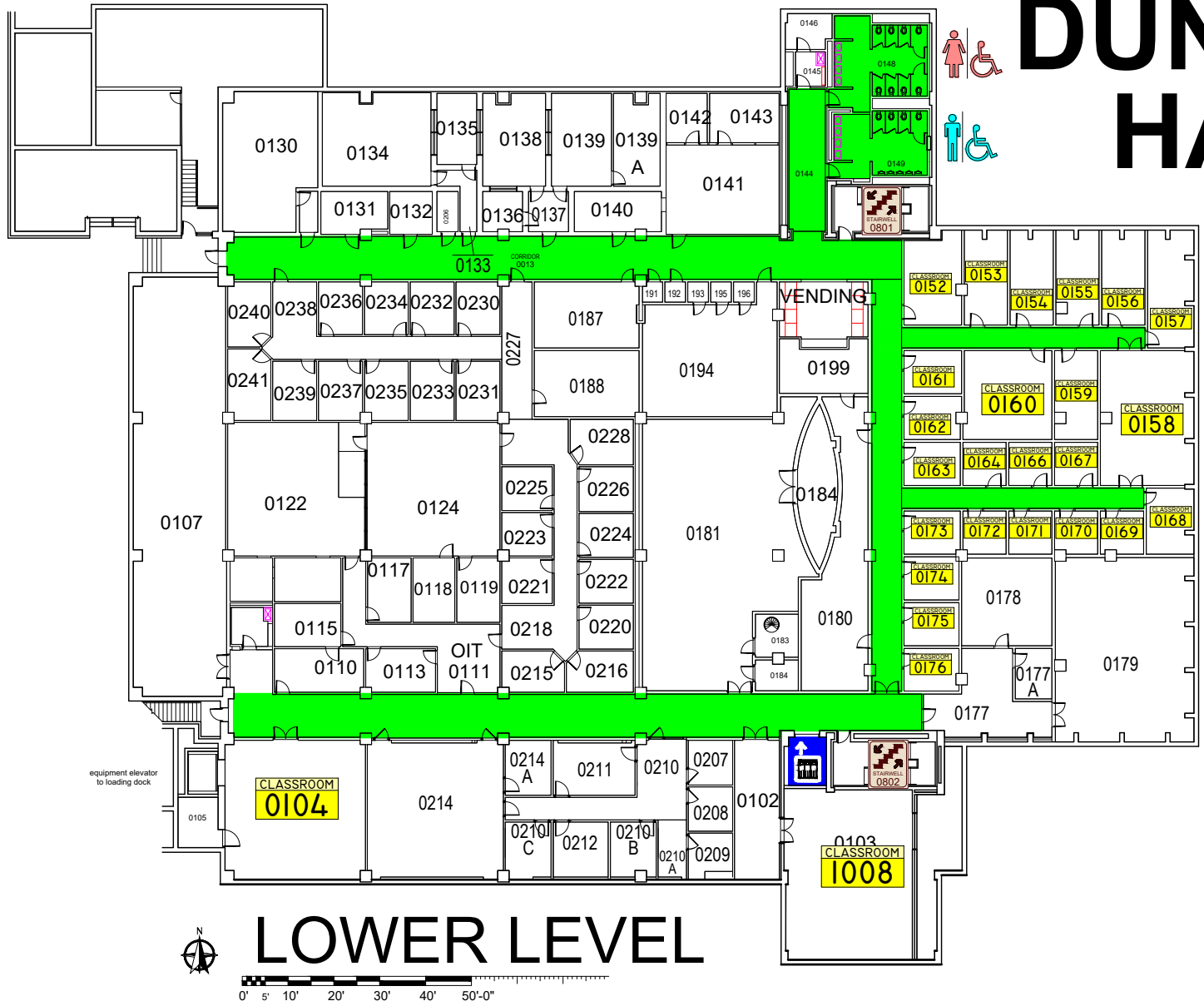
EMERGENCY STORM SHELTERS

In event of a Tornado Warning everyone should go to a

PRIMARY STORM SHELTERS

located here on the lower level

DUNHAM HALL



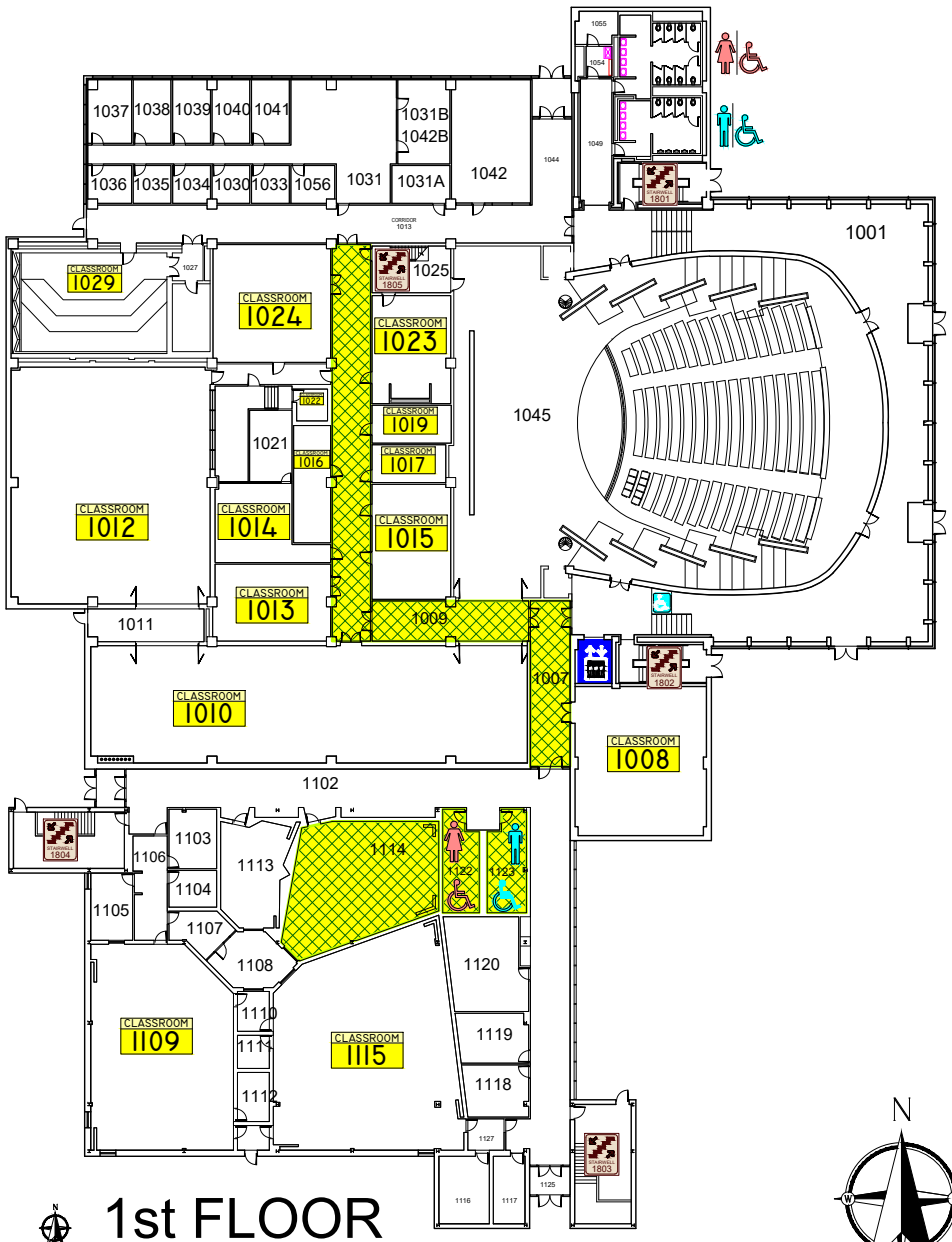
LOWER LEVEL

EMERGENCY STORM SHELTERS

In event of a Tornado Warning everyone should go to a Lower Level **Primary Storm Shelter**

In event you can not get to a Primary Shelter go to a **Secondary Storm Shelter**

located on 1st, 2nd, & 3rd floors



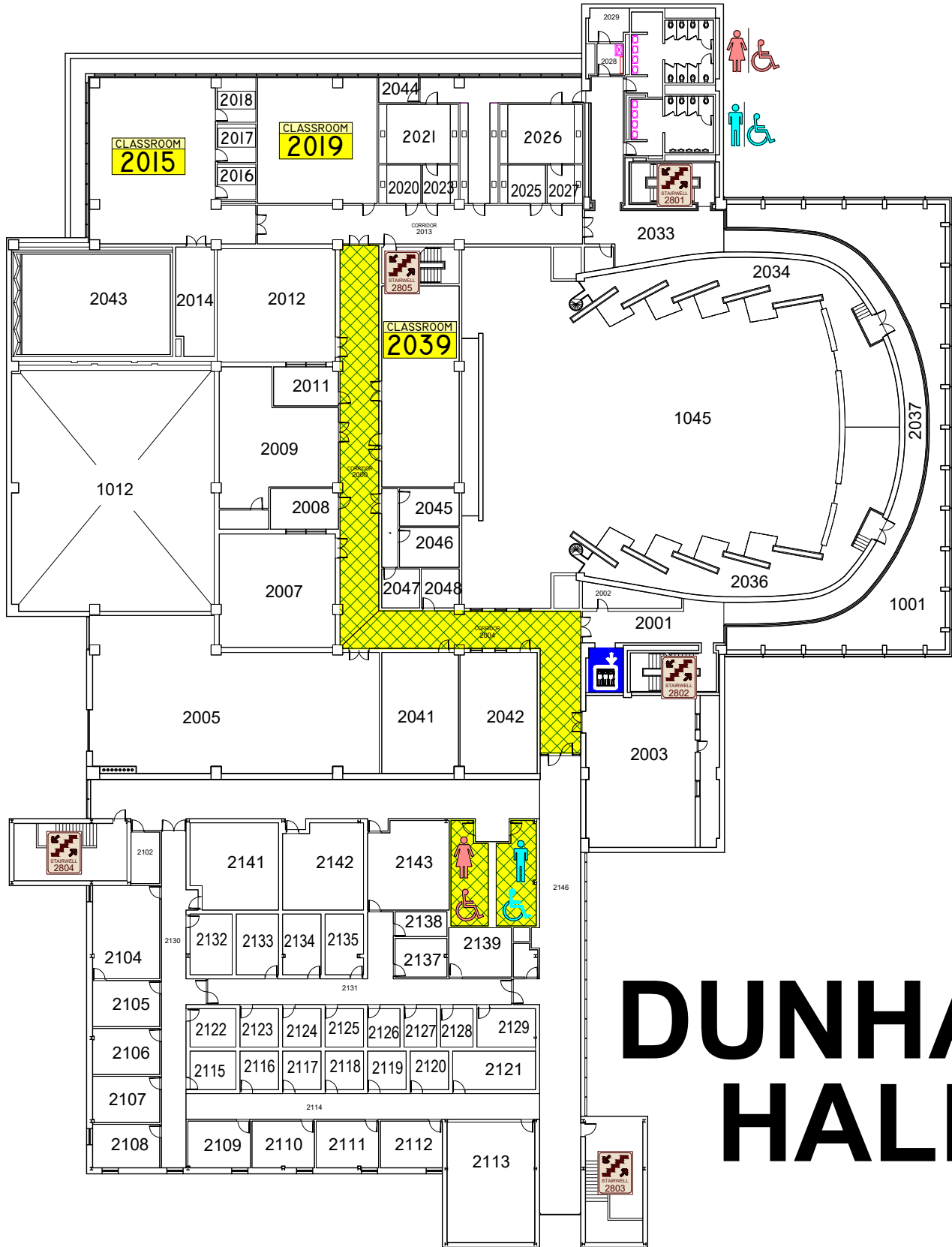
DUNHAM HALL

EMERGENCY STORM SHELTERS

In event of a Tornado Warning everyone should go to a Lower Level **Primary Storm Shelter**

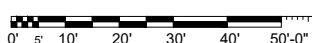
In event you can not get to a Primary Shelter go to a **Secondary Storm Shelter**

located on 1st, 2nd, & 3rd floors



DUNHAM HALL

2nd FLOOR



EMERGENCY EXIT PLAN

EXIT IN CASE OF EMERGENCY USE MARKED EXITS **EXIT**

 **IN CASE OF FIRE DO NOT USE ELEVATORS** 
 **USE STAIRWAYS** 

 **WHEELCHAIR USERS ARE TO GO STAIR-WELL AND WAIT FOR EMERGENCY PERSONNEL.**  **EXIT**



LOWER LEVEL

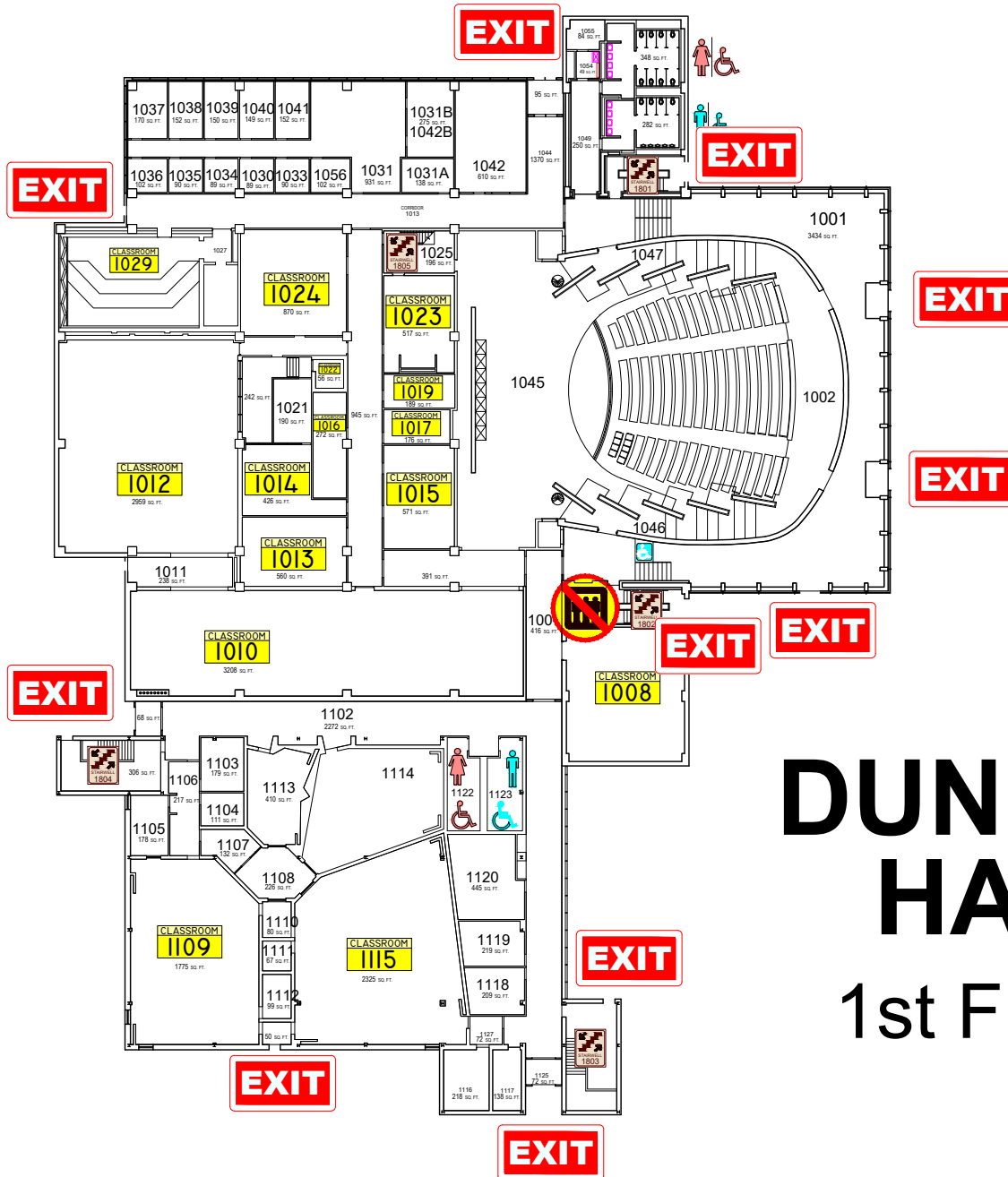
DUNHAM HALL

EMERGENCY EXIT PLAN

EXIT IN CASE OF EMERGENCY USE MARKED EXITS **EXIT**

IN CASE OF FIRE DO NOT USE ELEVATORS

USE STAIRWAYS



DUNHAM HALL

1st FLOOR

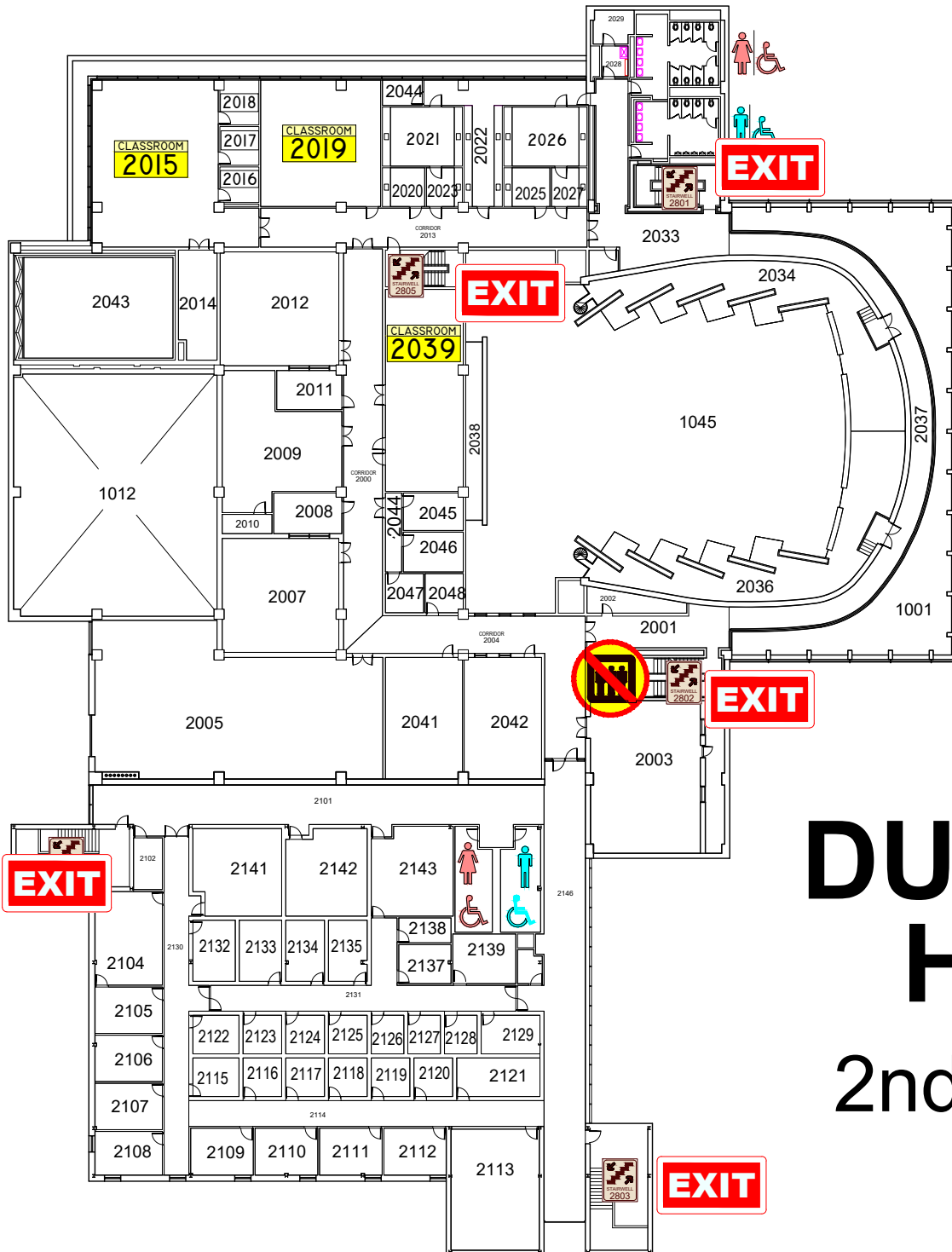
EMERGENCY EXIT PLAN

EXIT IN CASE OF EMERGENCY USE MARKED EXITS **EXIT**

 **IN CASE OF FIRE DO NOT USE ELEVATORS** 

 **USE STAIRWAYS** 

 **WHEELCHAIR USERS ARE TO GO STAIRWELL AND WAIT FOR EMERGENCY PERSONNEL.**  **EXIT**



DUNHAM HALL

2nd FLOOR