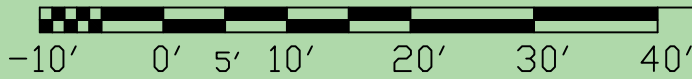


RELIGIOUS CENTER



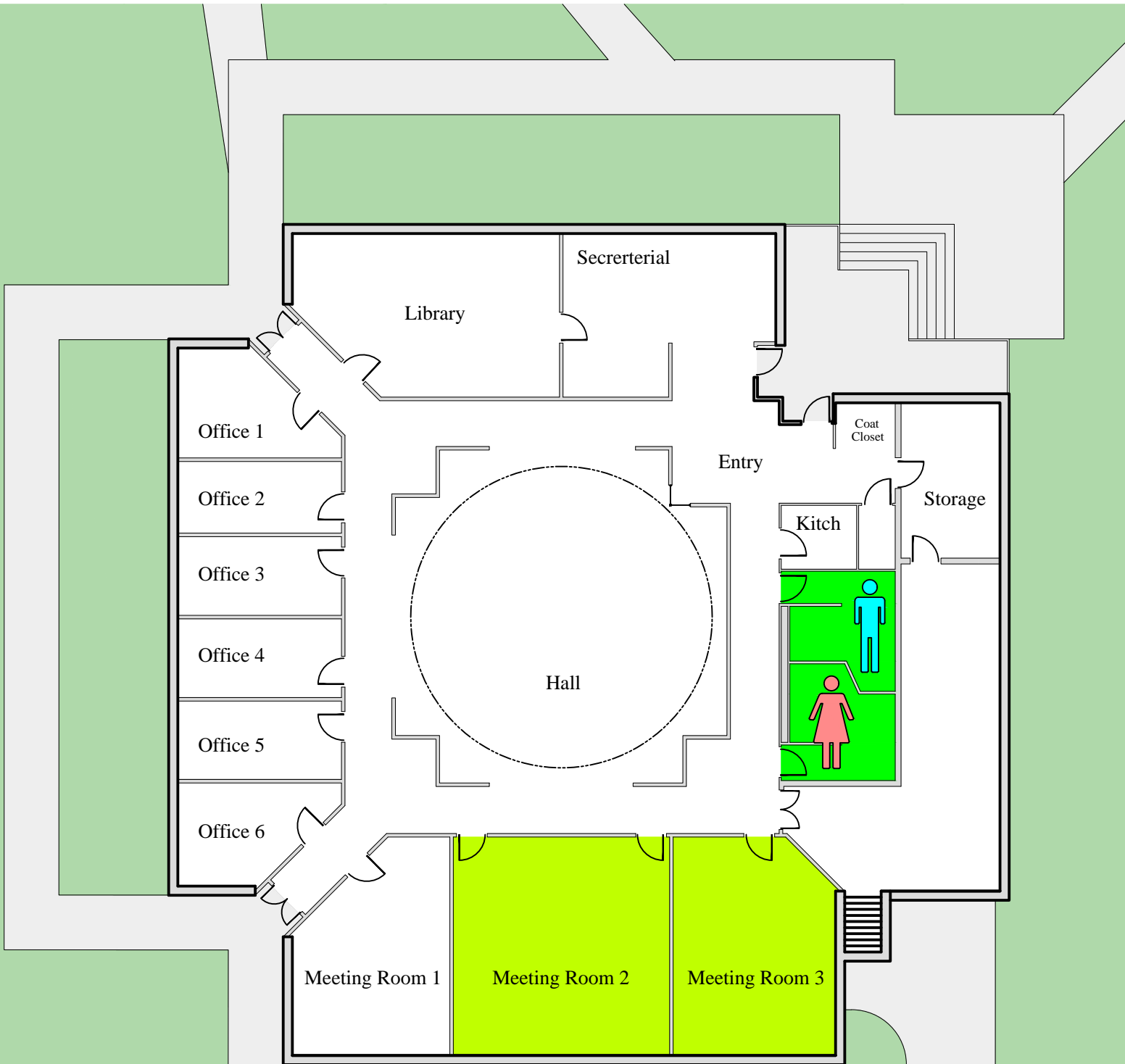
EMERGENCY STORM SHELTERS

In event of a Tornado Warning everyone should go to a

PRIMARY SHELTER

In event you can not get to a Primary Shelter go to a

SECONDARY STORM SHELTER



RELIGIOUS CENTER



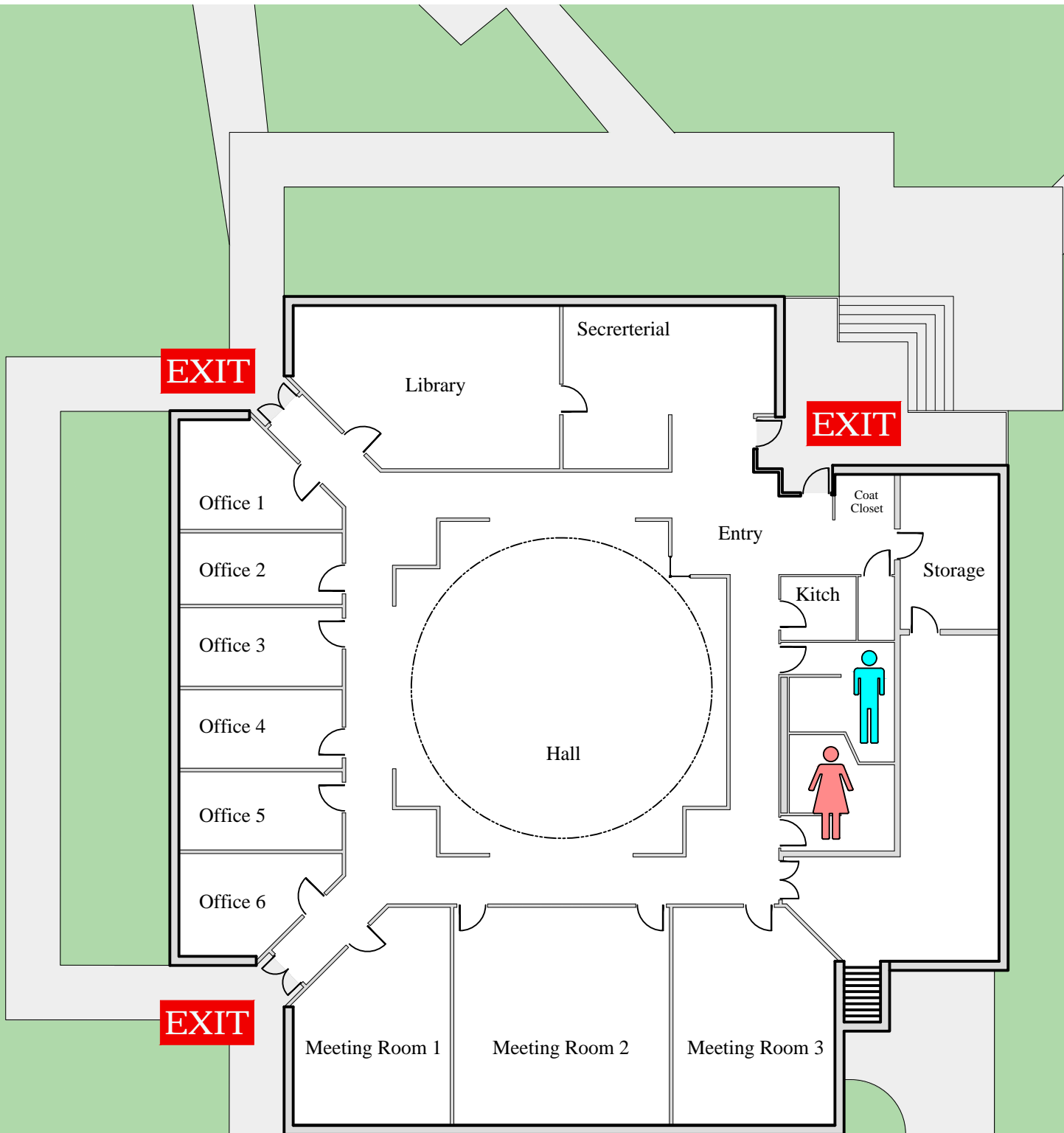
-10' 0' 5' 10' 20' 30' 40'

EMERGENCY EXIT PLAN

EXIT

IN CASE OF EMERGENCY USE MARKED EXITS

EXIT



RELIGIOUS CENTER

